



TK International  
020 7794 8700  
www.t-k.co.uk

Residential Sales  
Residential Lettings  
Property Management

Sales Office:  
9 Heath Street  
Hampstead  
London NW3 6TP  
E: sales@t-k.co.uk

Lettings Office:  
16-18 Heath Street  
Hampstead  
London NW3 6TE  
E: lettings@t-k.co.uk

tk.international  
TK International  
TK International

Est.  
1998



## **Fitzjohns Avenue Hampstead NW3**

Forming part of this magnificent development, a stunning one double bedroom apartment, set on the second floor of this beautiful Victorian villa. This apartment offers a modern finish throughout and boasts a fully fitted open plan kitchen to reception, excellent built in storage and sash double glazed windows.

Located on the lower slopes of Fitzjohn's Avenue, the property is ideally positioned for the amenities of Hampstead Village, Swiss Cottage and Finchley Road, as well as being within walking distance of Primrose Hill.

EPC: C

Council Tax Band: D

**£519 Per Week**

**SOLE AGENT**





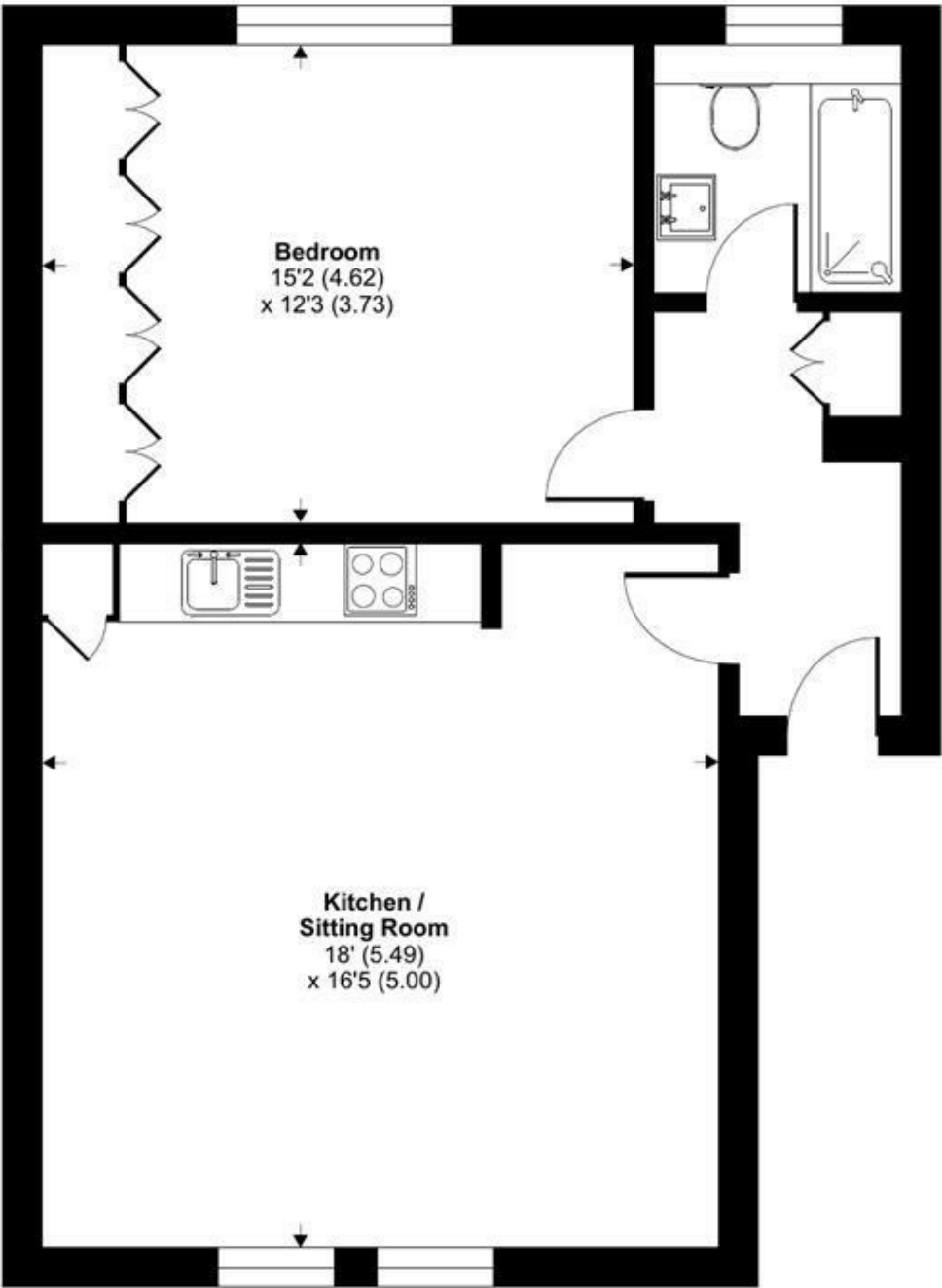




# Fitzjohns Avenue, London, NW3

Approximate Area = 613 sq ft / 56.9 sq m

For identification only - Not to scale



**SECOND FLOOR**



**Certified  
Property  
Measurer**

Floor plan produced in accordance with RICS Property Measurement Standards incorporating International Property Measurement Standards (IPMS2 Residential). © nichecom 2023.  
Produced for TK (Hampstead) Ltd. REF: 960959